

EDGE EHS ESP SENSORS

High Speed Comms for a long life ESP



TECHNICAL INFORMATION

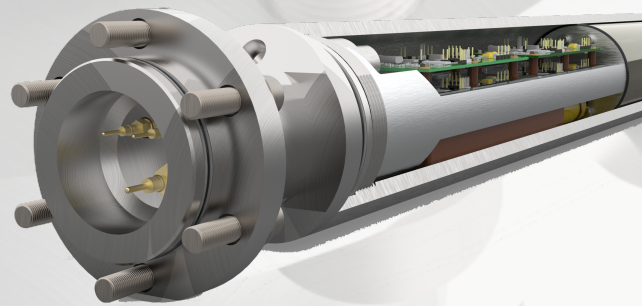
GROUND FAULT ZERO

EHS 'Ground Fault Zero' ESP Sensor Information

THE Edge Ground Fault Zero 150C ESP sensor is installed on the bottom of the ESP motor using a flange connection and is electrically connected to the motor via the wye point.

The sensor is designed to operate under **full ground fault** conditions providing vital downhole data to allow the operator to optimise production while cautiously running the ESP. Operating under a full ground fault is one of the many advantages of the EHS-G sensor.

Another is the **Hi-Speed communications**, the 8 sensor readings including the pump intake pressure is transmitted up to 3 times per second. The speed of transfer enhances ESP protection, improve on reservoir build ups and aid in better reservoir management.



**Pump intake pressure
up to 3 times/second**



**Capable of
50X Faster**



**Ground Fault Zero
[inc. Dead Short]**

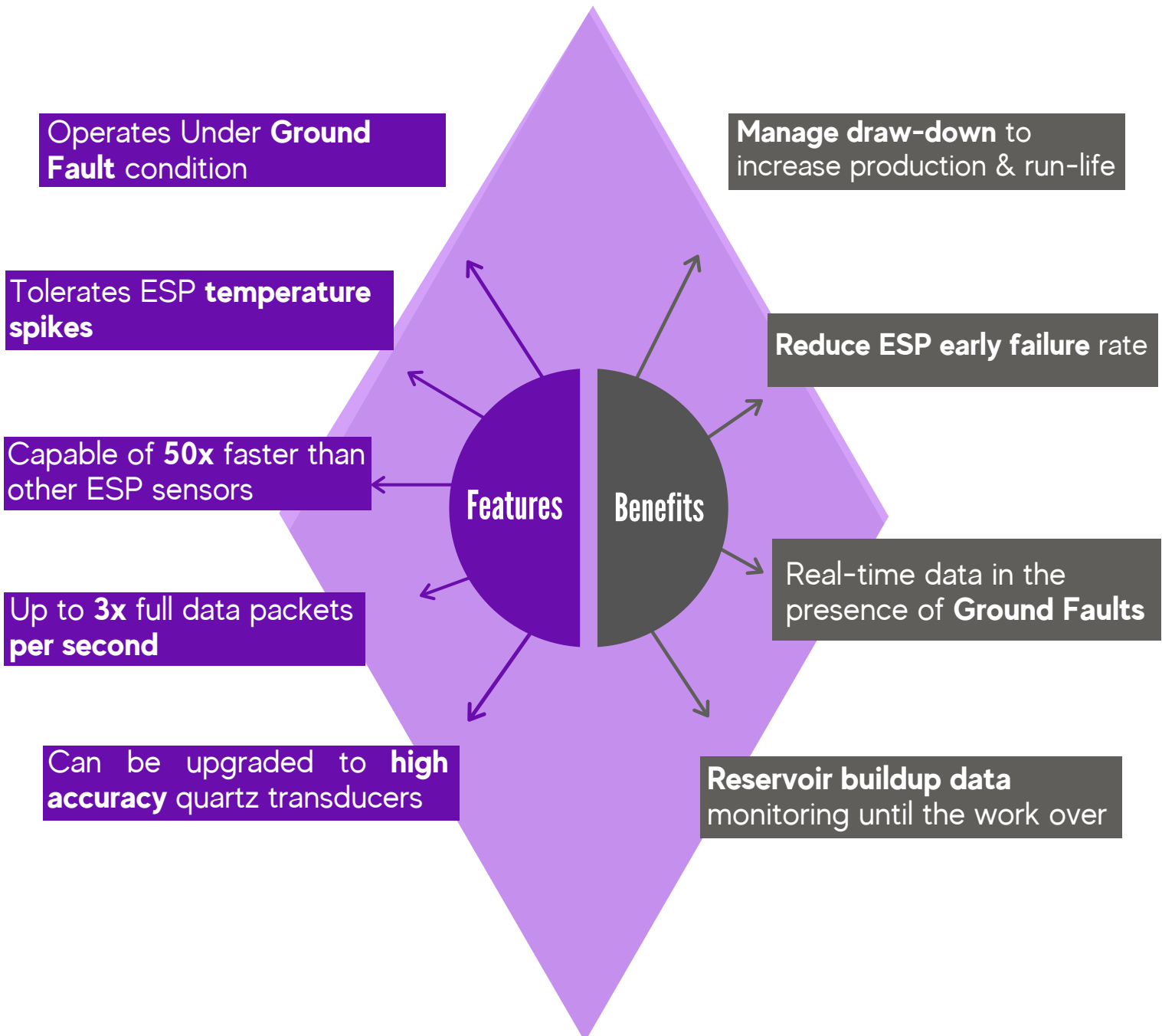
The sensor is flexible in design with the capability of providing high accuracy reservoir pressure data via a quartz crystal transducer* with bi-directional communications*. These options are available in the 'enhance EHS-G' model.

The EHS **digital surface panel** not only communicates with the downhole gauge it's versatile hardware and software design enables the EDGE surface panel to act as the well-site bi-directional data control hub with the capability to perform as Remote Terminal Unit (RTU).

Features & Benefits

Technical Specifications

Parameter	Units	Range	Resolution	Accuracy (FS)
Pump Intake Pressure	Psi/ Bar	0-400/ 0-690 bar	0.01 Psi	0.1%
Pump Discharge Pressure	Psi/ Bar	0-400/ 0-690 bar	0.01 Psi	0.1%
Well Temperature	C/F	0-150C	0.01 C	0.1%
Motor Oil/Winding Temperature	C/F	0-260C	0.01 C	0.1%
Vibration X & Y	g	0-20	0.001	1%
Current Leakage (Insulation)	mA	0-75mA	0.1mA	0.1%
Wye Point Voltage	Vac	0-3.5kV	1V	5%





EDGE
TECHNOLOGIES LTD

info@EdgeTechnologiesltd.com